

**Maple
Studio**

Content

Schematic Design

July 3rd 2024

01

Look and Feel

Industrial Midcentury

02

Floor Plan and Program

Approved Layout

Areas Schedule

03

3D Images

Main Facade

Back Facade



EHOMES

SCHEMATIC DESIGN

House A



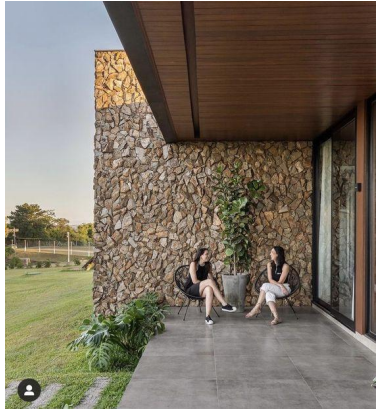
Look and Feel

E Homes



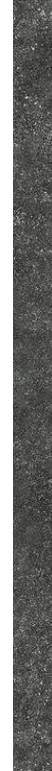
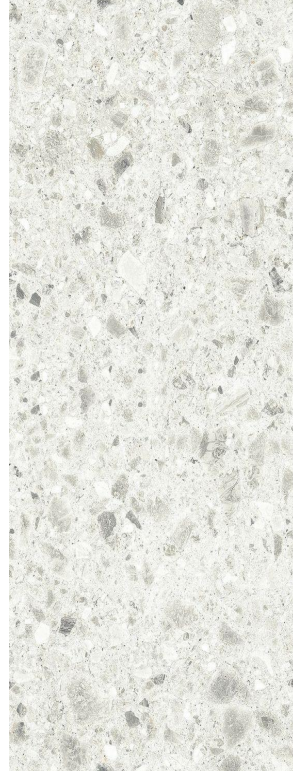
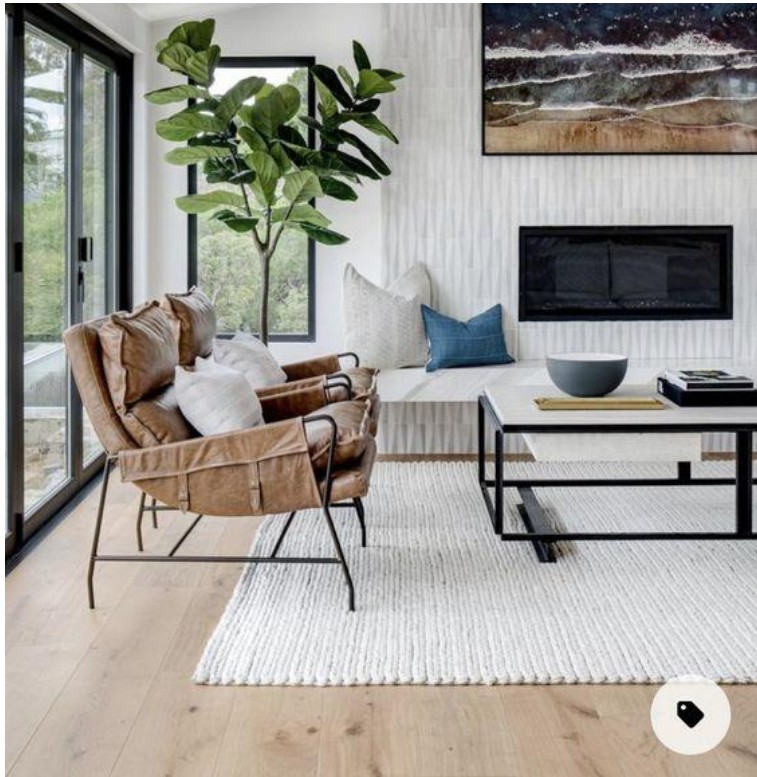
Exterior Look and Feel

Industrial Midcentury



Interior Look and Feel

Common Areas



Floor Plan

E-Homes House A

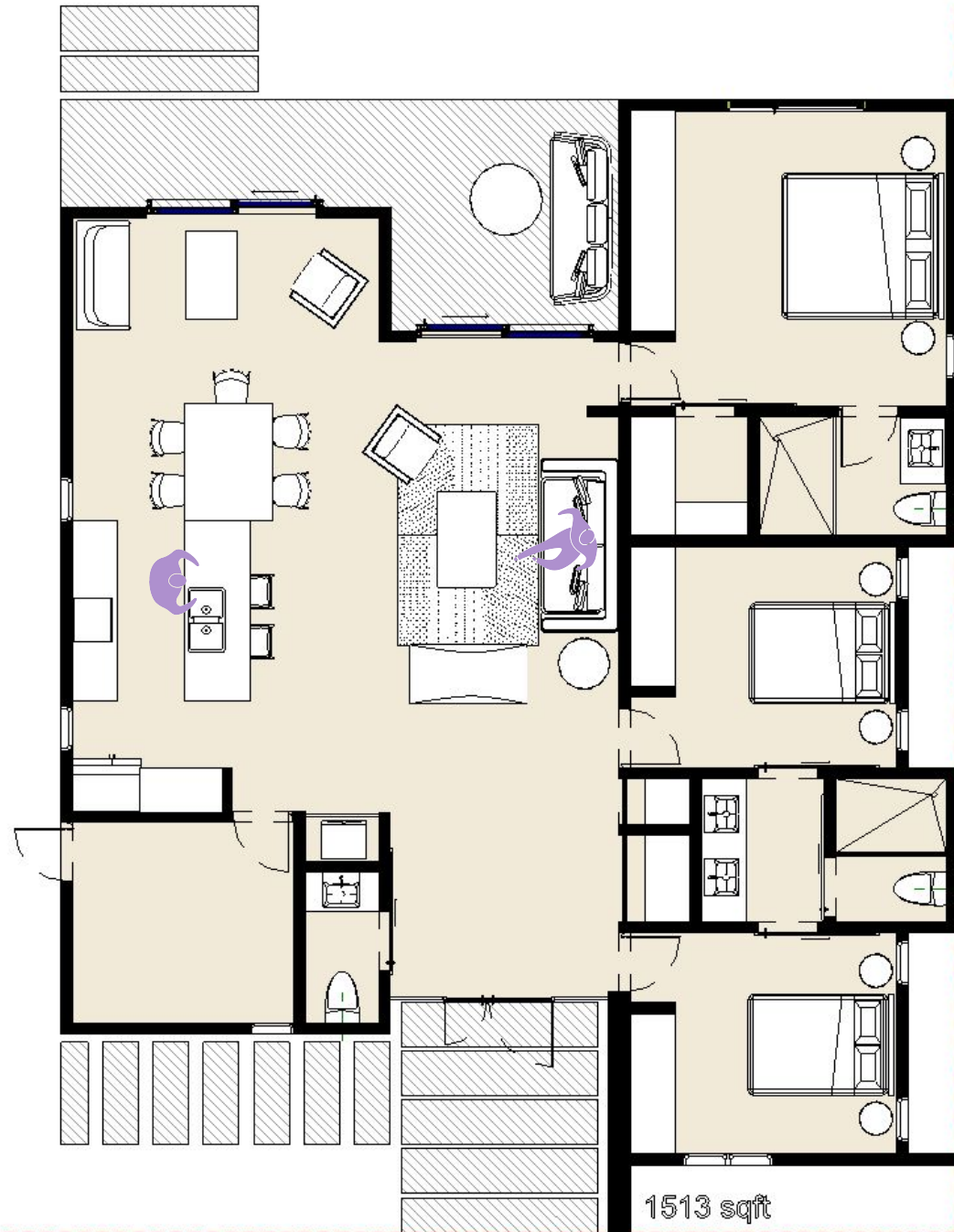
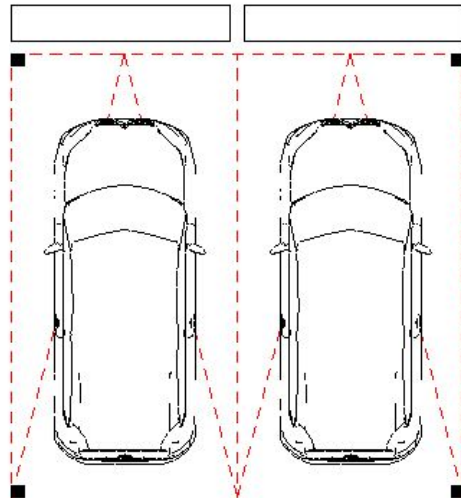


Floor Plan

1513 sqft

3 Bedrooms – 2.5 Bathrooms

<areas>		
A	B	C
Space	sqmt	sqft
Foyer	7.85 m ²	84.5 sqft
Visitors WC	2.04 m ²	21.95 sqft
Laundry	0.60 m ²	6.45 sqft
Storage	8.16 m ²	87.83 sqft
Kitchen	9.44 m ²	101.61 sqft
Living and Dining	44.87 m ²	482.97 sqft
Master Bedroom	16.98 m ²	182.77 sqft
Closet	2.56 m ²	27.55 sqft
WC	4.07 m ²	43.80 sqft
Bedroom A	10.76 m ²	115.81 sqft
Shared WC	6.42 m ²	69.10 sqft
Bedroom B	10.74 m ²	115.60 sqft
Linen	1.02 m ²	10.97 sqft
HVAC	0.53 m ²	5.7 sqft
Back Terrace	16.40 m ²	176.52 sqft
Total general: 15	142.44 m²	



3D Images

Project Name



3D View

Main Facade



3D View

Main Facade



3D View

Main Facade



3D View

Back View



3D View

Back View



Floor Plan

Option 1,513 sqft

3 Bedrooms – 2.5 Bathrooms



3D View

Frontview – Rainy view



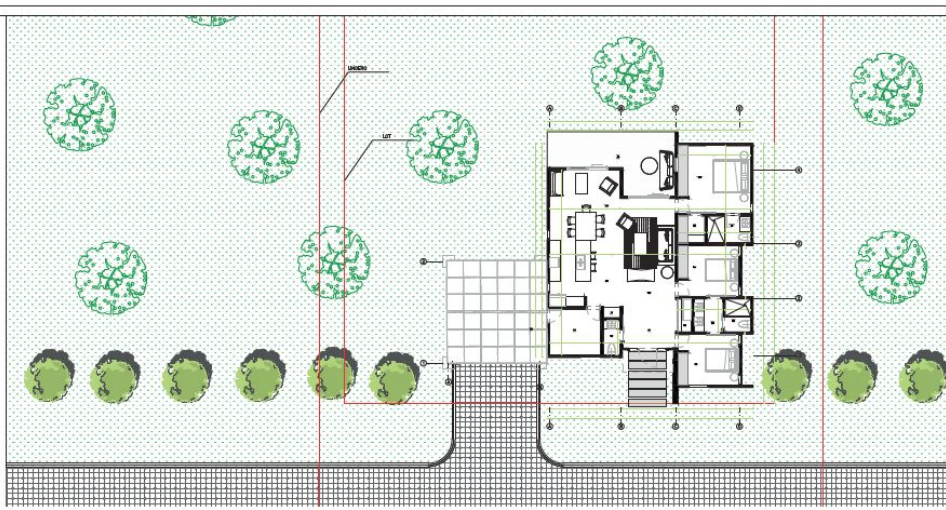
DD Plans and Elevations

E Homes



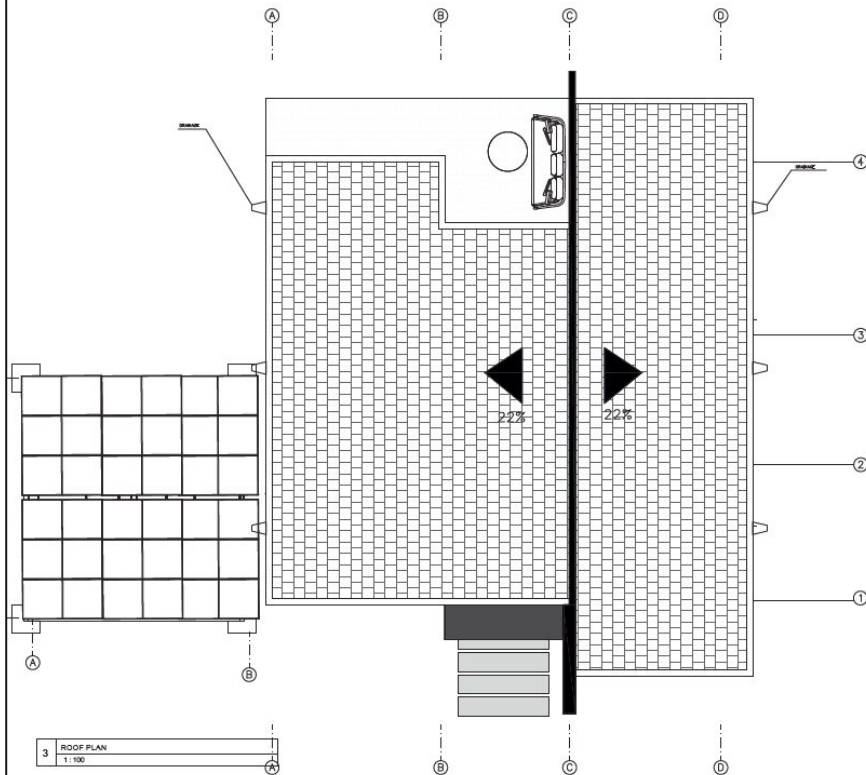
DD Plans

General Plans

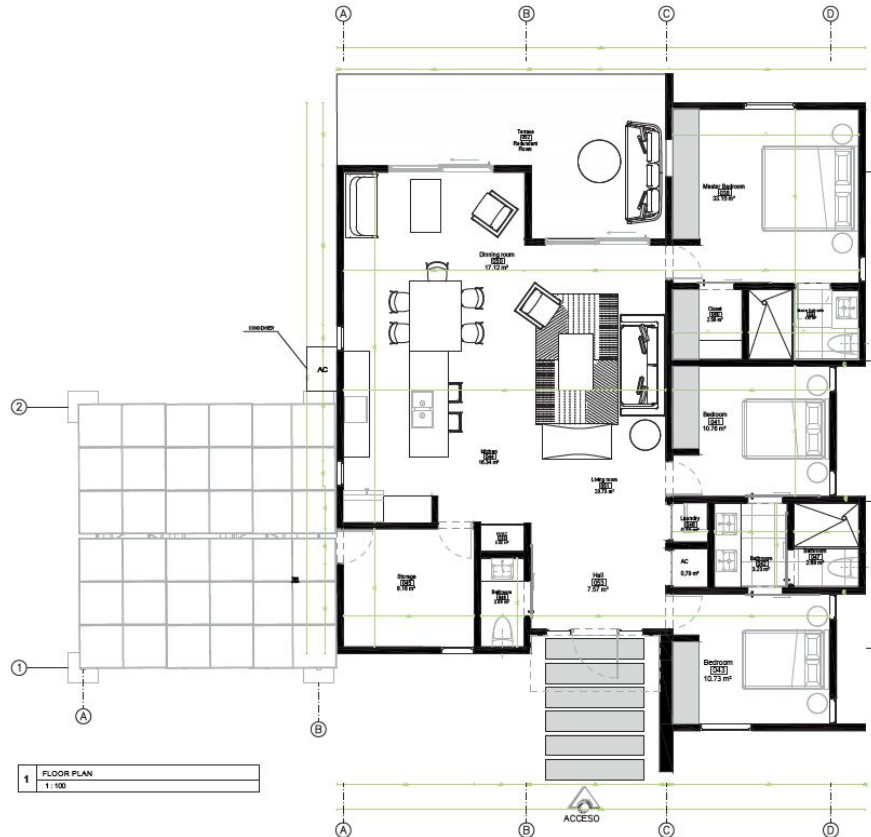


2 SITE PLAN
1:200

<areas>		
A	B	C
Space	sqmt	sqft
Foyer	7.85 m ²	84.5 sqft
Visitors WC	2.04 m ²	21.95 sqft
Loungery	0.60 m ²	6.45 sqft
Storage	8.16 m ²	87.83 sqft
Kitchen	9.44 m ²	101.61 sqft
Living and Dining	44.87 m ²	482.97 sqft
Master Bedroom	16.98 m ²	182.77 sqft
Closet	2.56 m ²	27.55 sqft
WC	4.07 m ²	43.80 sqft
Bedroom A	10.76 m ²	115.81 sqft
Shared WC	6.42 m ²	69.10 sqft
Bedroom B	10.74 m ²	115.60 sqft
Linen	1.02 m ²	10.97 sqft
HVAC	0.53 m ²	5.7 sqft
Back Terrace	16.40 m ²	176.52 sqft
Total general: 15	142.44 m ²	



3 ROOF PLAN
1:100



1 FLOOR PLAN
1:100



MAPLE STUDIO SAS
CALLE 47 # 10-10, BOGOTÁ, COLOMBIA (0501)
Tel: +57 (0)1 261 20 00
www.maplestudio.co

PROJECT:
Architect

OWNER:
Architect

ALL THE LEGAL RIGHTS, INCLUDING WITHOUT LIMITATION, AUTHOR RIGHTS AND PATENT DESIGN RIGHTS IN THE ORIGINAL PLAN AND COMPLEMENTARY DOCUMENTS THAT APPEAR AND ARE ASSOCIATED TO THIS SHEET ARE PROPERTY OF MAPLE STUDIO SAS AND WILL BE DEVELOPED FOR THE EXCLUSIVE USE OF THE PROJECT. THEY CANNOT BE USED OR REVISED IN ITS ENTIRETY OR PART OF IT, WITHOUT THE RELATION TO THIS PROJECT AND/OR PREVIOUS CONSENT, GRANTED IN WRITING, FROM MAPLE STUDIO SAS.

FOR ADDITIONAL AND/OR COMPLEMENTARY INFORMATION ABOUT STRUCTURE, PLUMBING, POWER, MECHANICAL, LIGHTING AND OTHER COMPLEMENTARY DOCUMENTS TO THE PROJECT, CONSULT THE CONSTRUCTIVE DOCUMENTS DELIVERED BY THE PROJECT DIRECTOR IN SHEET A-1.0. THE CONTENT OF THIS SHEET HAS THE PURPOSE TO SHOW IDEALLY THE INTENTION OF THE DESIGN.

© MAPLE STUDIO SAS

REVISION CHART		
No.	Description	Date

AUTORIZED SIGNATURES:

Architect
ADMINISTRATIVE REPRESENTATIVE

Architect
OWNER

SCALE: 1:100 DELIVERY DATE: 16/06/2024 10:00 AM

CONTENT:
-Architectural Plan
-Roof Plan
-Site Plan

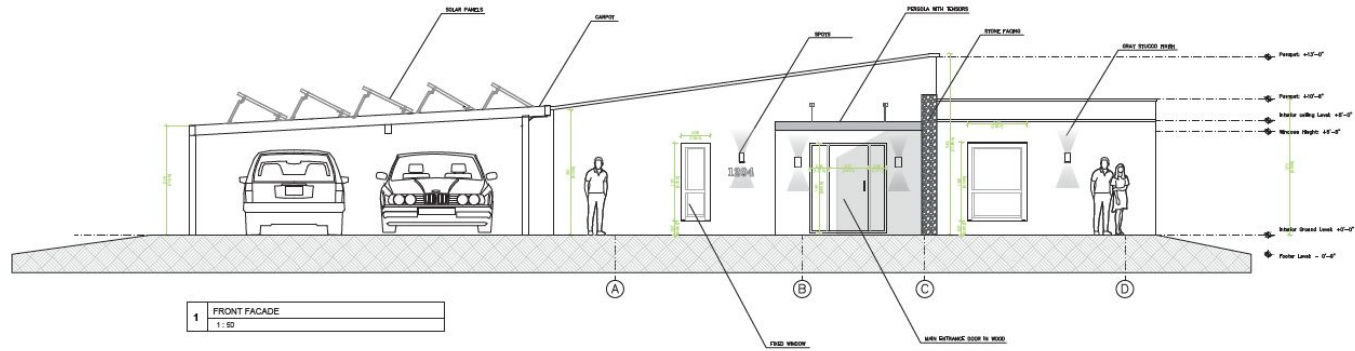
SHEET NUMBER:
A1.0

PROJECT STATUS:
Estado de proyecto

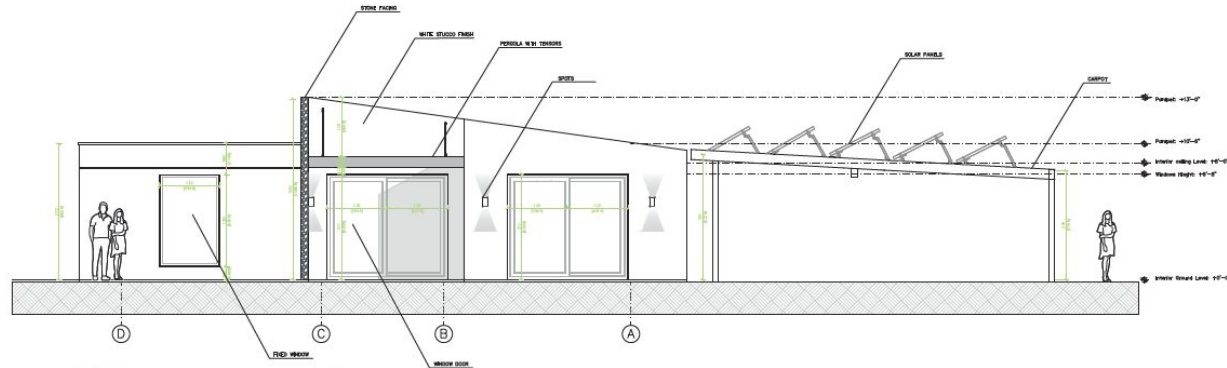


DD Plans

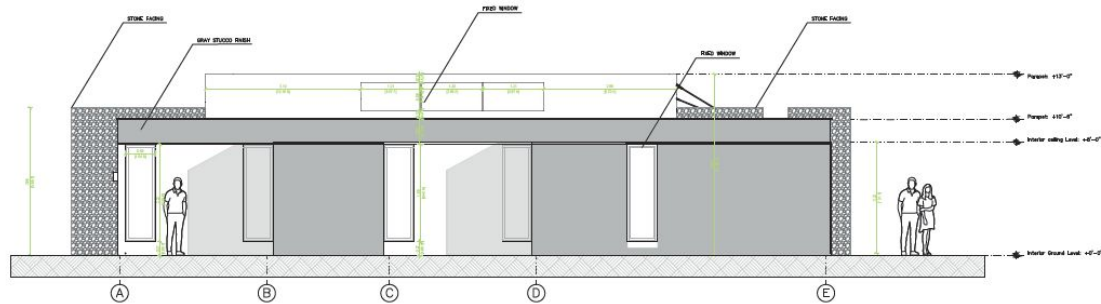
General Plans



1 FRONT FACADE
1:50



2 REAR FACADE
1:50



3 SIDE FACADE
1:50



MAPLE STUDIO LLC
1000 N. W. 10TH AVE., SUITE 1000
MIAMI, FL 33136
www.maplestudio.com

PROJECT:
1 PHASE 02/24

OWNER:
1 PHASE 02/24

ALL THE LEGAL RIGHTS, INCLUDING, WITHOUT LIMITATION, AUTHOR RIGHTS AND PATENT DESIGN RIGHTS IN THE DESIGN, PLANS AND COMPLEMENTARY DOCUMENTS THAT APPEAR HEREON ARE ASSIGNED TO THE USER ARE PROPERTY OF MAPLE STUDIO LLC AND WERE DEVELOPED OR IN THE EXCLUSIVE USE OF THE PROJECT. THEY CANNOT BE USED OR REPRODUCED IN ANY MANNER OR FOR ANY PURPOSE WITHOUT THE WRITTEN PERMISSION OF MAPLE STUDIO LLC.

FOR ADDITIONAL AND/OR COMPLEMENTARY INFORMATION ABOUT STRUCTURAL, MECHANICAL, ELECTRICAL, PLUMBING AND OTHER COMPLEMENTARY INFORMATION TO THIS PROJECT, CONSULT THE CONSTRUCTION DOCUMENTS DELIVERED BY THE ARCHITECT/ENGINEER INDICATED IN THE PROJECT DIRECTORY IN SHEET A-01. THE CONTENT OF THIS SHEET HAS THE PURPOSE TO SHOW SOLELY THE INTENTION OF THE DESIGNER.

© MAPLE STUDIO LLC

REVISION CHART		
No.	Description	Date

AUTHORIZED SIGNATURE:

ARCHITECT/ENGINEER

SCALE: 1:50 DELIVERY DATE:

CONTENT:
ELEVATIONS

SHEET NUMBER:
A2

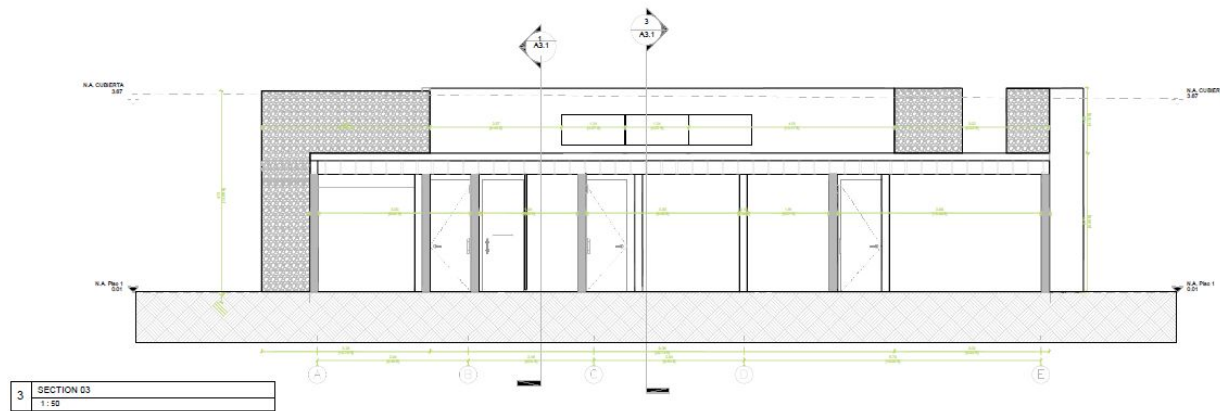
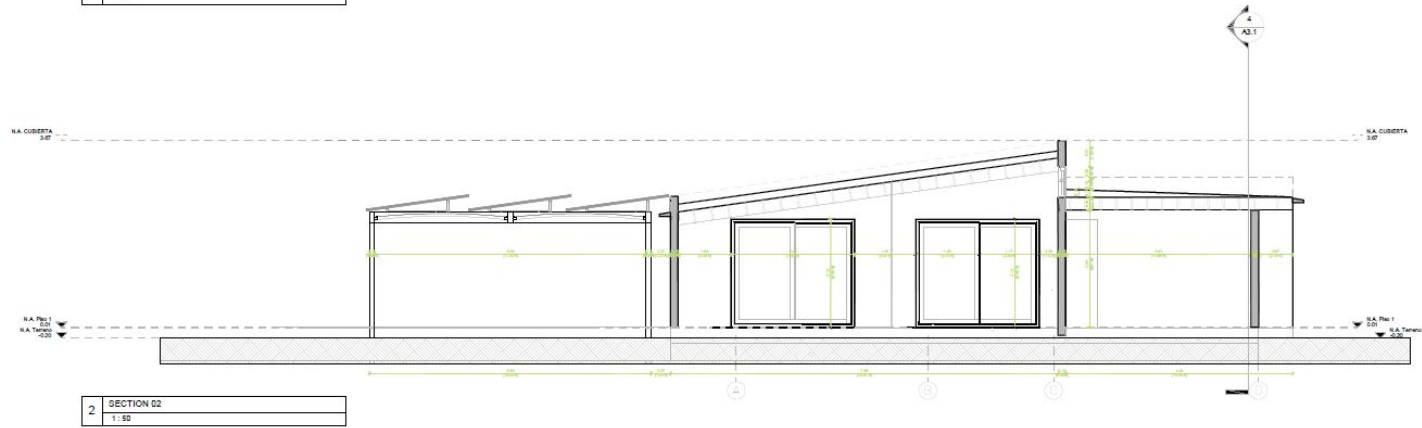
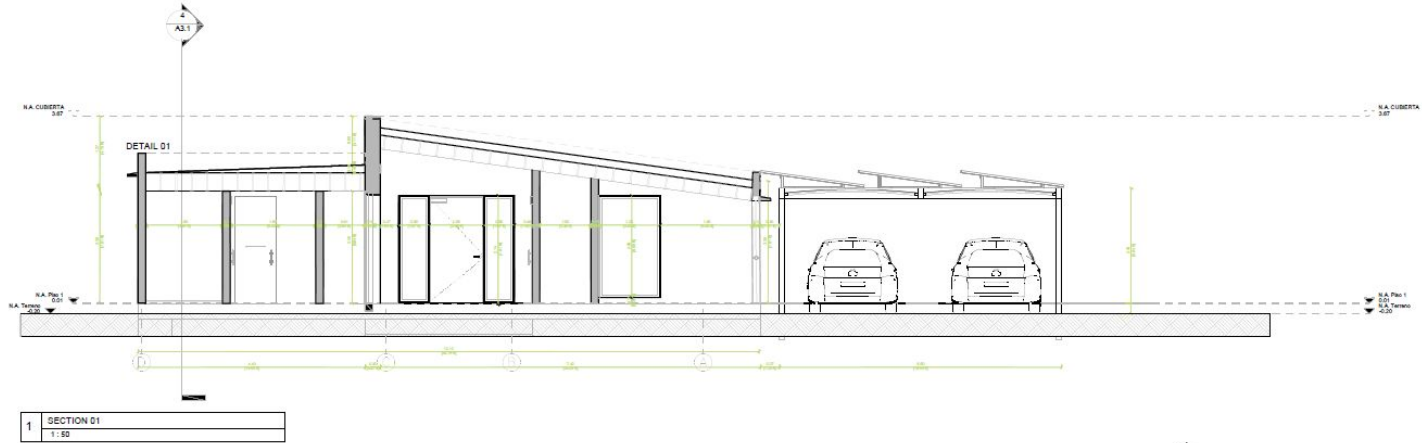
PROJECT STATUS:
DESIGN DEVELOPMENT



DD Plans

General Plans

DETAIL 01



MAPLE STUDIO S.A.
CALLE 430 DE NOROCCIDENTE, COLUMBIA, SUCRE
TEL: +593 9 950 0000
WWW.MAPLESTUDIO.COM

PROJECT:
ADDRESS:

OWNER:
ADDRESS:

ALL THE LEGAL RIGHTS, INCLUDING, WITHOUT LIMITATION, AUTHOR RIGHTS AND PATENT DESIGN RIGHTS IN THE DESIGN, PLANS AND COMPLEMENTARY DOCUMENTS THAT APPEAR AND/OR ARE ASSOCIATED TO THIS SHEET ARE PROPERTY OF MAPLE STUDIO S.A. AND WERE DELIVERED BY THE DISCUSSIVE USE OF THIS PROJECT. THEY CANNOT BE USED OR REPRODUCED IN ANY MANNER OR PART OF SUCH WITH RELATION TO THIS PROJECT AND/OR PREVIOUS CONCEPTS, GRANTED IN WRITING FROM MAPLE STUDIO S.A.

FOR ADDITIONAL AND/OR COMPLEMENTARY INFORMATION ABOUT STRUCTURE, HVAC, POWER, PLUMBING, LIGHTING AND OTHER COMPLEMENTARY DISCIPLINES TO THE PROJECT, CONSULT THE CONSTRUCTIVE DOCUMENTS DELIVERED BY THE DISCUSSIVE CONTRACTOR INDICATED IN THE PROJECT DIRECTORY IN SHEET A3.0. THE CONTENT OF THIS SHEET HAS THE PLEASURE TO SHOW SOLELY THE INTENTION OF THE DESIGN.
© Maple Studio S.A.

REVISION CHART		
No.	Description	Date

AUTHORIZED SIGNATURES:

 ARCHITECT

 ARCHITECT

SCALE:
1:50
 DELIVERY DATE:
10/2024

CONTENT:
SECTIONS

SHEET NUMBER:
A3.0

PROJECT STATUS:
Estado de proyecto

