

HOME BASE LIVING

2197 PEASLEY ST. PORT CHARLOTTE FL 33948



WE HAVE CHANGED THE WAY YOU WATCH BASEBALL!

32 UNITS + CLUB HOUSE
20 MULTI-FAMILY UNITS - 12 TOWNHOMES
3.3 ACRES

HOME BASE LIVING IS LOCATED IN A 3.3 ACRE MIXED-RESIDENTIAL PROJECT FEATURING 20 MULTI-FAMILY CONDOS, 12 TOWN HOMES AND A STATE-OF-THE-ART COMMUNAL CLUBHOUSE. LOCATED IN THE HEART OF CHARLOTTE COUNTY, ALONG THE INCREDIBLY BEAUTIFUL CHARLOTTE SPORTS PARK, WE OFFER A UNIQUE LOCATION FOR THOSE LOOKING TO LIVE IN A NEW AND VIBRANT COMMUNITY, WITH EASY ACCESS TO THE REST OF THE CITY.

WE ARE OFFERING OUR CUSTOMERS A MORE EFFICIENT AND SUSTAINABLE LIVING EXPERIENCE. WITH OUR IMPRESSIVE PANORAMIC VIEW OF THE SPORTS FACILITY AND GREEN BUILDING TECHNIQUE, HOME BASE LIVING OFFERS SOMETHING NO OTHER LOCATION IN PORT CHARLOTTE CAN OFFER.

E-HOME FEATURES

- GREEN BUILDING
- HURRICANE RESISTANT
- FIREPROOF*
- TERMITE PROOF
- ECOLOGIC
- ACOUSTIC

AMENITIES

- EUROPEAN- STYLE
- ITALKRAFT CABINETRY IN KITCHENS AND BATHS
- DESIGNER PLUMBING FIXTURES
- CROSSFIT TRAIL
- WELLNESS CENTER (SAUNA, TURKISH BATH, RESTING AREA)
- COMMUNITY POOL
- GATED COMMUNITY
- SUNDECK
- ELEVATOR (FOR CONDOS)
- STORAGE

VISIT HOMEBASELIVINGFL.COM - CONTACT PABLO ARCE (786)5640841

HOME BASE LIVING

2197 PEASLEY ST. PORT CHARLOTTE FL 33948



CONDO A
2 2

1,055 SF + 279 SF BALCONY

CONDO B
2 2

1,055 SF + 300 SF BALCONY

CONDO C
3 2

1,269 SF + 300 SF BALCONY



TOWNHOME A
2 2 2

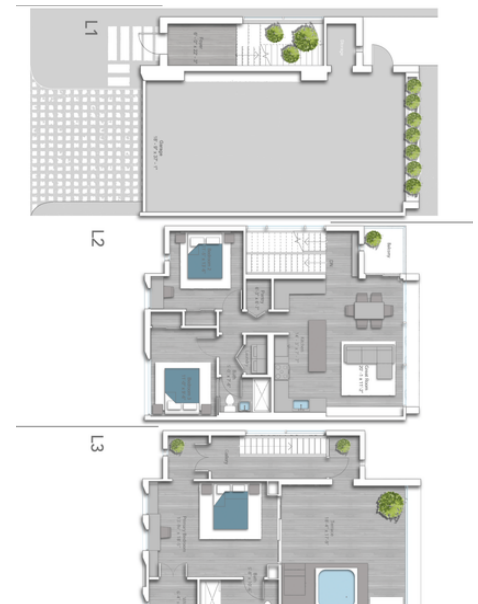
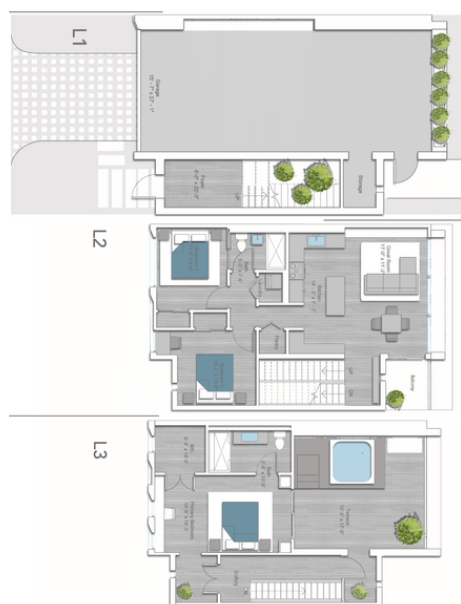
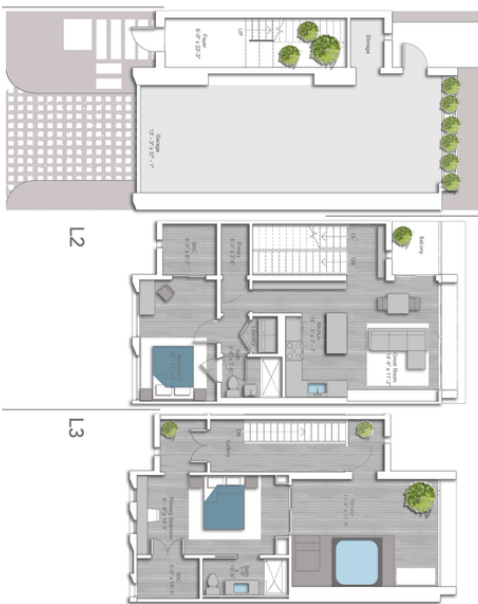
1,459 SF + 266 SF TERRACE

TOWNHOME B
3 2 2

1,591 SF + 305 SF TERRACE

TOWNHOME C
3 2 2

1,789 SF + 356 SF TERRACE



ORAL REPRESENTATIONS CANNOT BE RELIED UPON AS CORRECTLY STATING THE REPRESENTATIONS OF THE DEVELOPER. FOR CORRECT REPRESENTATIONS, MAKE REFERENCE TO THE DOCUMENTS REQUIRED BY SECTION 708.503, FLORIDA STATUTES, TO BE FURNISHED BY A SELLER TO A BUYER OR LEASE.

VISIT HOMEBASELIVINGFL.COM - CONTACT PABLO ARCE (786)5640841



EFFICIENT
DEVELOPMENT GROUP

CONTACT
SALES@EFFICIENTDEVELOPMENTS.COM

EFFICIENTDEVELOPMENTS.COM

ABOUT OUR HOMES INCLUSIONS

- SEEKING THE FLORIDA GREEN BUILDING CERTIFICATE
- CAREFULLY THOUGHT OUT SPACIOUS FLOOR PLANS
- HIGH IMPACT WINDOWS
- UNIQUE WOOD-STYLE FLOORS THROUGHOUT
- FRONT LOAD FULL SIZE WASHER & DRYER
- BUILT-IN SPACE MAXIMIZING CLOSETS
- DIGITAL PROGRAMMABLE THERMOSTATS
- KEYLESS ENTRY
- DESIGNER LIGHTING FIXTURES
- METAL ROOFS
- GALVANIZED STEEL FRAME STRUCTURE
- HURRICANE PROTECTION ON SLIDING DOORS AND WINDOWS
- TERMITE-PROOF
- FIRE RESISTANT
- 8 MONTHS CONSTRUCTION SCHEDULE

ABOUT OUR KITCHENS

- QUARTZ COUNTER TOPS
- ITALIAN CABINETRY WITH UNDER CABINET LIGHTING
- ISLAND AREA FOR ENTERTAINMENT
- TILE BACKSPLASH
- ITALIAN CABINETRY PANTRY
- MULTI-FEATURE KITCHEN FAUCET
- STAINLESS STEEL HIGH EFFICIENCY APPLIANCES

ABOUT OUR BATHS

- DESIGNER VANITIES WITH LIGHTED MIRRORS
- FULL HEIGHT PORCELAIN WET WALLS IN SHOWERS & TUBS
- FRAMELESS GLASS SHOWER ENCLOSURES
- RAIN SHOWERS & HAND-HELD SHOWERS IN MASTER BATH

ORAL REPRESENTATIONS CANNOT BE RELIED UPON AS CORRECTLY STATING THE REPRESENTATIONS OF THE DEVELOPER. FOR CORRECT REPRESENTATIONS, MAKE REFERENCE TO THE DOCUMENTS REQUIRED BY SECTION 708.503, FLORIDA STATUTES, TO BE FURNISHED BY A SELLER TO A BUYER OR LEASE.