

HOME BASE TOWNHOMES

2197 PEASLEY ST. PORT CHARLOTTE FL 33948



32 UNITS - 20 CONDOS AND 12 TOWNHOMES

E-HOME FEATURES

- GREEN BUILDING
- HURRICANE RESISTANT
- FIREPROOF
- TERMITE PROOF
- ECOLOGIC
- ACOUSTIC

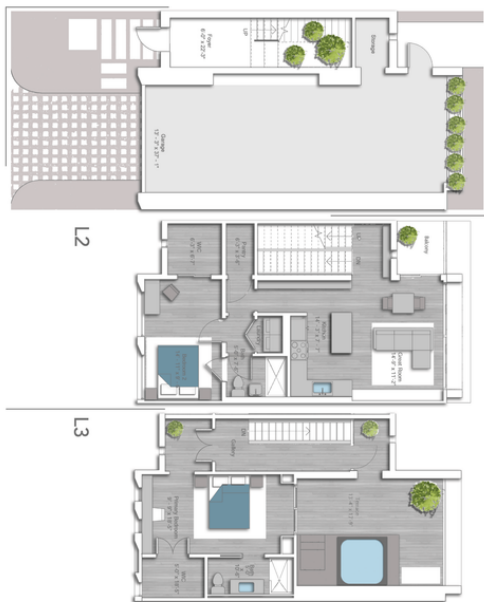
AMENITIES

EUROPEAN- STYLE ITALKRAFT CABINETRY IN KITCHENS AND BATHS

DESIGNER PLUMBING FIXTURES - CROSSFIT TRAIL
WELLNESS CENTER (SAUNA, TURKISH BATH, RESTING AREA)
COMMUNITY POOL - GATED COMMUNITY - SUNDECK
ELEVATOR (FOR CONDOS) - STORAGE

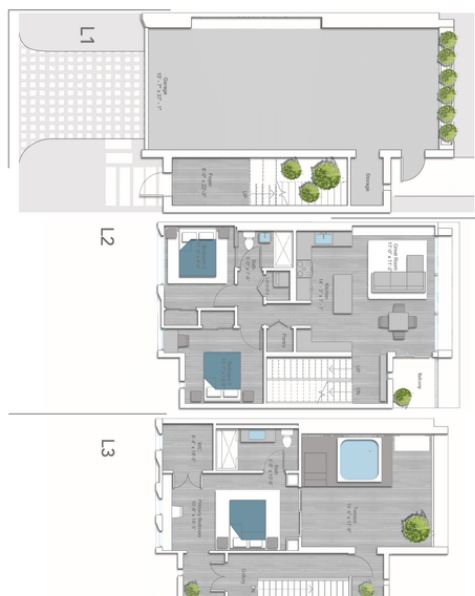
TOWNHOME A 2 2 2

1,459 SF + 266 SF TERRACE



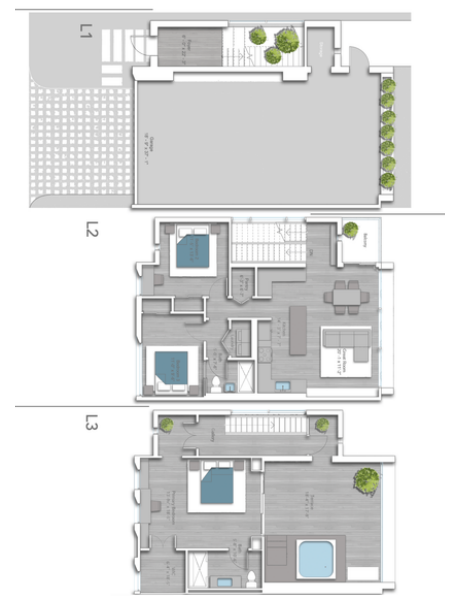
TOWNHOME B 3 2 2

1,591 SF + 305 SF TERRACE



TOWNHOME C 3 2 2

1,789 SF + 356 SF TERRACE



VISIT HOMEBASELIVINGFL.COM - CONTACT PABLO ARCE (786)5640841



EFFICIENT
DEVELOPMENT GROUP

CONTACT
SALES@EFFICIENTDEVELOPMENTS.COM

EFFICIENTDEVELOPMENTS.COM

ABOUT OUR HOMES INCLUSIONS

- SEEKING THE FLORIDA GREEN BUILDING CERTIFICATE
- CAREFULLY THOUGHT OUT SPACIOUS FLOOR PLANS
- HIGH IMPACT WINDOWS
- UNIQUE WOOD-STYLE FLOORS THROUGHOUT
- FRONT LOAD FULL SIZE WASHER & DRYER
- BUILT-IN SPACE MAXIMIZING CLOSETS
- DIGITAL PROGRAMMABLE THERMOSTATS
- KEYLESS ENTRY
- DESIGNER LIGHTING FIXTURES
- METAL ROOFS
- GALVANIZED STEEL FRAME STRUCTURE
- HURRICANE PROTECTION ON SLIDING DOORS AND WINDOWS
- TERMITE-PROOF
- FIRE RESISTANT
- 8 MONTHS CONSTRUCTION SCHEDULE

ABOUT OUR KITCHENS

- QUARTZ COUNTER TOPS
- ITALIAN CABINETS WITH UNDER CABINET LIGHTING
- ISLAND AREA FOR ENTERTAINMENT
- TILE BACKSPLASH
- ITALIAN CABINETS PANTRY
- MULTI-FEATURE KITCHEN FAUCET
- STAINLESS STEEL HIGH EFFICIENCY APPLIANCES

ABOUT OUR BATHS

- DESIGNER VANITIES WITH LIGHTED MIRRORS
- FULL HEIGHT PORCELAIN WET WALLS IN SHOWERS & TUBS
- FRAMELESS GLASS SHOWER ENCLOSURES
- RAIN SHOWERS & HAND-HELD SHOWERS IN MASTER BATH

ORAL REPRESENTATIONS CANNOT BE RELIED UPON AS CORRECTLY STATING THE REPRESENTATIONS OF THE DEVELOPER. FOR CORRECT REPRESENTATIONS, MAKE REFERENCE TO THE DOCUMENTS REQUIRED BY SECTION 708.503, FLORIDA STATUTES, TO BE FURNISHED BY A SELLER TO A BUYER OR LEASE.